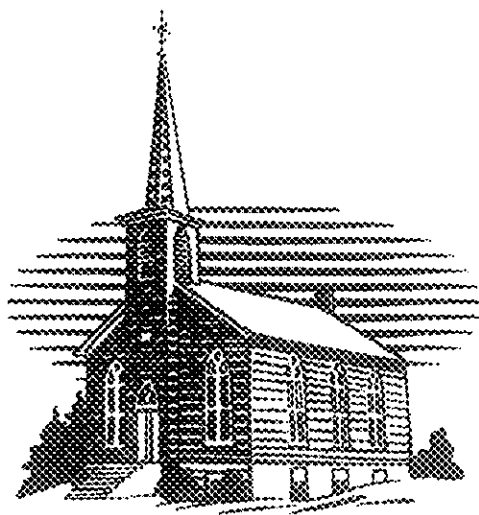


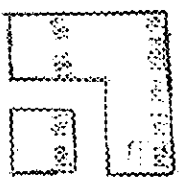
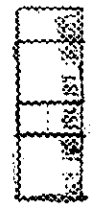
New Hope United Methodist Church Cemetery Directory



Prepared by Chase McIlwain
Eagle Scout Project
Troop 280
2005

NEW HOPE CHURCH DRIVEWAY

NEW HOPE ROAD



NEW HOPE UNITED METHODIST CHURCH CEMETERY MAP

Prepared by: Chase McIlwain
Eagle Scout Project
Troop 280

Row	1	2	3	4	5	6	7	8	9	10	11	12	13	14	15	16	17	18	19	20	21	22	23	24	25	26	27	28	29	30	31	32
Column	1	2	3	4	5	6	7	8	9	10	11	12	13	14	15	16	17	18	19	20	21	22	23	24	25	26	27	28	29	30	31	32

Grave Number	Name	Date of Birth	Date of Death
C54	Arnold, Lizzie S.	December 1889	October 1, 1977
C50	Banister, Jasper Agnew	February 19, 1870	August 13, 1947
C51	Banister, Othella	November 25, 1874	March 28, 1926
K167	Beebe, Roger Neil	*	July 5, 1958
K168	Beebe, Susan Dale	*	November 18, 1957
G108	Boggs, Eloise Milford	July 28, 1881	March 20, 1953
H109	Boggs, Laurence Clayton	January 1, 1883	January 8, 1959
F90	Bolt, Abram	May 12, 1839	April 29, 1910
B19	Bolt, Adolphus J.	October 20, 1889	May 26, 1942
B18	Bolt, Emmie Simmons	November 23, 1880	June 26, 1948
D64	Bolt, Lawson A.	February 20, 1952	January 23, 1941
D63	Bolt, Robert A.	July 27, 1889	January 10, 1931
F91	Bolt, Roy	August 9, 1893	March 22, 1906
J123	Bowen, Elijah A.	May 30, 1832	March 3, 1933
J125	Bowen, Mary J.	September 24, 1883	August 6, 1960
G100	Bowen, Tisha	* 1888	May 23, 1906
B24	Broadwell, Georgia Eugenia	* 1881	* 1928
B23	Broadwell, Lessie Bolt	* 1910	* 1911
B26	Broadwell, Lola C Gunter	* 1902	* 1996
B25	Broadwell, William Young	* 1882	* 1972
B29	Broadwell, Willie H.	March 30, 1905	January 1, 1989
C53	Brock, Bessie Duncan	* Feb. 17	* Sept. 21
C49	Brown, Elizabeth Junkin	November 4, 1852	December 24, 1923
G96	Bryant, Robert Morton	October 13, 1919	February 19, 1921
A2	Busby, Agnes W.	May 21, 1925	May 17, 1994
H115	Busby, Amanda	*	* 1892
C46	Busby, Bessie	April 22, 1887	May 11, 1905
A11	Busby, Beulah Carson	August 11, 1897	October 6, 1979
A1	Busby, Carl L.	April 13, 1922	January 13, 2001
A9	Busby, Cynthia C.	July 19, 1845	September 1, 1913
A7	Busby, Dock F.	February 23, 1878	September 1, 1952
C45	Busby, Frank	November 4, 1902	September 4, 1903
A8	Busby, James T.	November 8, 1847	May 23, 1915
A5	Busby, Max Gaston	January 22, 1920	May 7, 1964
A6	Busby, Sara B.	August 29, 1879	August 14, 1957
A10	Busby, Walter Dickson	July 28, 1889	January 30, 1954
K160	Clark, Loyd C.	* 1897	* 1932
F89	Clarke, Mary M.	February 3, 1841	October 28, 1923
L172	Coker, Albert Ralph	March 24, 1937	March 26, 1937
L176	Coker, Anne Rigdon	December 17, 1930	November 9, 1950
L173	Coker, Columbus H.	September 17, 1896	November 26, 1992
M183	Coker, Frank J.	April 5, 1926	November 16, 1993
L174	Coker, Janie Poore	April 25, 1906	April 1, 1937
L175	Coker, Patricia Gail	July 26, 1949	December 30, 1949
M182	Coker, Samuel B.	December 11, 1934	September 29, 1994
A15	Cox, Alice B.	November 29, 1920	* 2004
A14	Cox, Ralph	June 23, 1921	
E69	Cox, William Cecil	April 13, 1908	June 16, 1932
J138	Daniel, Jerry A.	* 1937	* 1937
J137	Daniel, John C.	July 12, 1884	May 16, 1935

J135	Daniel M. C.	June 22, 1856	February 28, 1928
J138	Daniel, Minnie F.	October 20, 1889	September 24, 1973
G95	Daniel, Ruby L.	December 6, 1919	September 22, 1920
J126	Daniel, Thomas G.	June 9, 1881	March 25, 1874
C37	Dean, Carrie Alicia	December 1, 1980	December 1, 1980
C52	Doyle, Hupert	October 30, 1906	April 11, 1927
A13	Dunn, Pearlie M.	* 1908	* 1999
A12	Dunn, T. H.	* 1911	* 1899
G101	Elrod, Alfred	*	*
F76	Elrod, Bertie McCully	October 21, 1866	May 12, 1922
G99	Elrod, Claud A.	November 10, 1887	November 29, 1917
F71	Elrod, John C.	* 1878	* 1923
F75	Elrod, John Thomas	December 23, 1853	December 29, 1923
F77	Elrod, Robert A.	December 16, 1897	September 18, 1945
J153	Evans, A. C.	September 28, 1916	January 1, 1945
J155	Evans, David A.	March 15, 1882	May 4, 1927
J154	Evans, J. O.	August 4, 1911	January 25, 1927
J156	Evans, Josie F.	March 2, 1893	February 15, 1971
A4	Gaillard, Elizabeth B.	October 5, 1921	March 17, 1988
A3	Gaillard, Norman H.	November 16, 1916	
B16	Gray, Anne R.	* 1904	* 1991
C43	Gray, Charles T.	March 19, 1871	January 10, 1946
C42	Gray, Mamie B.	February 22, 1891	February 16, 1958
B17	Gray, Swain N.	* 1908	* 1955
D56	Grigg, James T.	November 11, 1908	February 27, 1916
D60	Hall, Alven N.	January 3, 1854	February 28, 1900
D58	Hall, Claude	December 12, 1897	February 21, 1901
D61	Hall, Lena Martin	December 26, 1866	October 23, 1923
D59	Hall, Prue	January 17, 1885	June 18, 1886
F70	Hanks, Infant Daughter of J.F.	January 11, 1924	January 12, 1924
G98	Hanks, Paul	* 1882	October 30, 1918
F72	Hanks, Truman B.	March 7, 1930	July 10, 1935
C35	Harbin, Carl Jr.	May 6, 1940	
C39	Harbin, Carl Sr.	December 5, 1907	September 14, 1965
C38	Harbin, Bessie G.	April 22, 1906	June 19, 1984
C36	Harbin, Shelby S.	October 11, 1939	July 4, 2003
C40	Harbin, Tim Franklin	November 13, 1945	November 21, 1945
K163	Harris, Jordan	April 19, 1940	April 19, 1940
J146	Harrison, Don and Dan	February 1, 1951	February 2, 1951
J145	Harrison, Larry Edward	January 25, 1942	February 11, 1942
J147	Harrison, Necota S.	October 7, 1909	June 12, 1961
J144	Harrison, Patrick and Patricia	January 29, 1939	January 29, 1939
J148	Harrison, William A.	November 13, 1900	April 17, 1954
F73	Hatcher, Will F.	September 11, 1884	February 6, 1972
F74	Hatcher, Corine E.	April 13, 1883	August 20, 1963
B22	Hays, Lessie	December 1, 1874	July 7, 1908
J136	Hembree, Mary G.	September 22, 1860	July 26, 1934
J158	Hicks, Della O.	* 1891	* 1961
K159	Hicks, John C.	December 13, 1924	March 10, 1928
J157	Hicks, John W.	* 1886	* 1962
J141	Holbrooks, Jesse	August 5, 1883	February 9, 1951

K161	Jears, Roselee	August 28, 1908	October 27, 1962
M180	Jefferson, Annie K.	* 1884	* 1971
N189	Jefferson, James	January 18, 1951	
N188	Jefferson, James Louie	March 28, 1923	December 15, 1953
M181	Jefferson, John J.	* 1878	* 1950
N187	Jones, Dannie	September 25, 1945	September 27, 1946
D65	Junkin, Robert	* 1825	* 1895
J150	Keys, Daisy C.	April 9, 1882	November 9, 1958
J151	Keys, Evelyn D.	October 17, 1926	August 8, 1936
J148	Keys, John D.	August 8, 1872	January 26, 1944
J152	Keys, Tressie E.	February 11, 1910	February 14, 1927
D65	Little, Ella C.	October 13, 1871	August 23, 1922
H114	Madtheus, Aiden	January 17, 1913	March 8, 1913
J142	McAlister, Thomas J.	August 13, 1903	October 8, 1945
K171	Norris, Wilburn F.	* 1884	* 1958
B28	Rigdon, Lula Beulah	* 1908	* 1940
B27	Rigdon, W. Marvin	* 1907	* 1930
B30	Rigdon, Wilbur E.	February 7, 1928	January 5, 1974
G97	Robertson, Effie	May 20, 1888	July 29, 1939
K169	Robeson, Sallie C.	* 1884	* 1961
G94	Royle, Mrs C.E.	* 1840	February 19, 1914
J128	Scott, Laura E. and Baby	January 29, 1883	March 25, 1923
K165	Shifflett, Ida D.	December 25, 1874	June 28, 1956
J127	Shifflett, Lizzie M. Hunt	* 1901	* 1928
L178	Shifflett, Martha M.	October 7, 1904	November 16, 1978
K164	Shifflett, Richard Seaborn	April 21, 1897	September 19, 1940
L179	Shifflett, Rubert	* 1925	* 1954
L177	Shifflett, William M.	March 22, 1903	April 2, 1974
H110	Simpson, Linda Ruth	January 7, 1941	November 7, 1943
C33	Skelton, Alice Price	* 1894	* 1961
C34	Skelton, Frue D.	* 1877	* 1948
B31	Smith, Annie S.	January 4, 1887	December 9, 1944
B32	Smith, William D.	July 21, 1883	January 28, 1952
C47	Sonffett, Evie T.	November 1, 1913	February 7, 1964
C48	Sonffett, Jimmy S.	July 30, 1912	September 12, 1966
I120	Steadman, Laura Ann	July 23, 1948	July 23, 1948
J133	Sullivan, Ben C.	February 22, 1887	June 28, 1940
J134	Sullivan, Bertha M.	March 21, 1925	September 22, 1926
J132	Sullivan, Essie H.	April 27, 1890	December 5, 1971
J131	Sullivan, Frances E.	August 15, 1926	July 27, 1959
J143	Tankersly, William N.	*	*
N186	Todd, Archie L.	November 26, 1920	March 2, 1949
N184	Todd, James L.	March 20, 1943	February 8, 2005
N185	Todd, N. Luecile H.	October 15, 1921	
G107	Walter, Mary Jane	* 1860	May 13, 1915
G106	Waters, Louie	* 1832	*
G104	Waters, Mary L.	* 1895	* 1945
G105	Waters, William L.	* 1863	* 1934
I117	Wells, Eliza	December 25, 1829	May 4, 1921
H113	White, infant	August 1, 1911	August 1, 1911
F82	White, Anna B.	* 1867	* 1958

E68	White, Carl E.	April 5, 1926	May 6, 1927
F81	White, Charlie M.	* 1858	* 1919
H111	White, J. T.	*	*
E66	White, James L.	May 27, 1886	March 15, 1957
J140	White, Lester	* 1899	February 14, 1934
E67	White, Myrtle T.	July 19, 1888	July 6, 1928
F84	White, Reed Keller	December 8, 1906	April 24, 1912
I118	Whitten, Bessie M.	* 1890	* 1968
I122	Whitten, Rosa Elrod	*	April 1, 1920
I121	Whitten, Thomas Edward	*	November 4, 1922
I119	Whitten, W. Henry	* 1890	* 1946
C44	Empty		
F88	Empty		
J130	Empty		
B20	Unknown		
B21	Unknown		
C41	Unknown		
D57	Unknown		
D62	Unknown		
F78	Unknown		
F79	Unknown		
F83	Unknown		
F85	Unknown		
F86	Unknown		
F87	Unknown		
F92	Unknown		
F93	Unknown		
G102	Unknown		
G103	Unknown		
H112	Unknown	*	*
I116	Unknown	*	*
I124	Unknown		
K162	Unknown		
K166	unmarked		
K170	?, Lillie H.	* 1895	* 1960
J129	?, Louise D.	* 1925	* 1962

Grave Number	Name	Date of Birth	Date of Death
A1	Carl L. Busby	April 13, 1922	January 13, 2001
A2	Agnes W. Busby	May 21, 1925	May 17, 1994
A3	Norman H. Gaillard	November 16, 1916	
A4	Elizabeth B. Gaillard	October 5, 1921	March 17, 1988
A5	Max Gaston Busby	January 22, 1920	May 7, 1964
A6	Sara B Busby	August 29, 1879	August 14, 1957
A7	Dock F. Busby	February 23, 1878	September 1, 1952
A8	James T. Busby	November 8, 1847	May 23, 1915
A9	Cynthia C. Busby	July 19, 1845	September 1, 1913
A10	Walter Dickson Busby	July 29, 1889	January 30, 1954
A11	Beulah Carson Busby	August 11, 1897	October 6, 1979
A12	T.H. Dunn	* 1911	* 1999
A13	Pearlie M. Dunn	* 1908	* 1999
A14	Ralph Cox	June 23, 1921	
A15	Alice B. Cox	November 29, 1920	* 2004
B16	Anne R. Gray	* 1904	* 1991
B17	Swain N. Gray	* 1908	* 1955
B18	Emmie Simmons Bolt	November 23, 1880	June 26, 1948
B19	Adolphus J. Bolt	October 20, 1859	May 25, 1942
B20	Unknown		
B21	Unknown		
B22	Lessie Hays	December 1, 1874	July 7, 1908
B23	Lessie Bolt Broadwell	* 1910	* 1911
B24	Georgia Eugenia Broadwell	* 1881	* 1928
B25	William Young Broadwell	* 1882	* 1972
B26	Lola C Gunter Broadwell	* 1902	* 1996
B27	W. Marvin Rigdon	* 1907	* 1930
B28	Lula Beulah Rigdon	* 1908	* 1940
B29	Willie H. Broadwell	March 30, 1905	January 1, 1969
B30	Wilbur E. Rigdon	February 7, 1928	January 6, 1974
B31	Annie S. Smith	January 4, 1887	December 9, 1944
B32	William D. Smith	July 21, 1883	January 28, 1952
C33	Alice Price Skelton	* 1894	* 1961
C34	Prue D. Skelton	* 1877	* 1948
C35	Carl Harbin, Jr.	May 6, 1940	
C36	Shelby S. Harbin	October 11, 1939	July 4, 2003
C37	Carrie Alicia Dean	December 1, 1980	December 1, 1980
C38	Bessie G. Harbin	April 22, 1906	June 19, 1994
C39	Carl Harbin, Sr	December 5, 1907	September 14, 1965
C40	Tim Franklin Harbin	November 13, 1945	November 21, 1945
C41	Unknown		
C42	Mamie E. Gray	February 22, 1881	February 16, 1958
C43	Charles T. Gray	March 19, 1871	January 10, 1946
C44	Empty		
C45	Frank Busby	November 4, 1902	September 4, 1993
C46	Bessie Busby	April 22, 1887	May 11, 1906
C47	Erle T. Sonffett	November 1, 1913	February 7, 1984
C48	Jimmy S. Sonffett	July 30, 1912	September 12, 1966
C49	Elizabeth Junkin Brown	November 4, 1852	December 24, 1923
C50	Jasper Agnew Benister	February 19, 1870	August 13, 1947

C51	Othella Banister	November 25, 1874	March 28, 1926
C52	Hupert Doyle	October 30, 1906	April 11, 1927
C53	Bessie Duncan Brock	* Feb. 17	* Sept. 21
C54	Lizzie S. Arnold	December 1889	October 1, 1977
D55	Robert Junkin	* 1825	* 1895
D56	James T. Grigg	November 11, 1908	February 27, 1916
D57	Unknown		
D58	Claude Hall	December 12, 1897	February 21, 1901
D59	Prue Hall	January 17, 1885	June 18, 1886
D60	Aiven N. Hall	January 3, 1854	February 28, 1900
D61	Lena Martin Hall	December 26, 1866	October 23, 1923
D62	Unknown		
D63	Robert A. Bolt	July 27, 1889	January 10, 1931
D64	Lawson A. Bolt	February 20, 1962	January 23, 1941
D65	Ella C. Little	October 13, 1871	August 23, 1922
E66	James L. White	May 27, 1886	March 15, 1957
E67	Myrtle T. White	July 19, 1888	July 6, 1928
E68	Carl E. White	April 5, 1926	May 6, 1927
E69	William Cecil Cox	April 13, 1908	June 16, 1932
F70	Infant Daughter of J.F. Hanks	January 11, 1924	January 12, 1924
F71	John C. Elrod	* 1876	* 1923
F72	Truman B. Hanks	March 7, 1930	July 10, 1935
F73	Will F. Hatcher	September 11, 1884	February 6, 1972
F74	Corine E. Hatcher	April 13, 1883	August 20, 1963
F75	John Thomas Elrod	December 23, 1853	December 29, 1923
F76	Bertie McCully Elrod	October 21, 1866	May 12, 1922
F77	Robert A. Elrod	December 16, 1897	September 18, 1945
F78	Unknown		
F79	Unknown		
F81	Charlie M. White	* 1859	* 1919
F82	Anna B. White	* 1867	* 1958
F83	Unknown		
F84	Reed Keller White	December 8, 1906	April 24, 1912
F85	Unknown		
F86	Unknown		
F87	Unknown		
F88	Empty		
F89	Mary M. Clarke	February 3, 1841	October 28, 1923
F90	Abram Bolt	May 12, 1839	April 29, 1910
F91	Roy Bolt	August 9, 1893	March 22, 1906
F92	Unknown		
F93	Unknown		
G94	Mrs C.E. Royle	* 1840	February 18, 1914
G95	Ruby L. Daniel	December 8, 1919	September 22, 1920
G96	Robert Morton Bryant	October 13, 1919	February 19, 1921
G97	Effie Robertson	May 20, 1888	July 29, 1936
G98	Paul Hanks	* 1882	October 30, 1918
G99	Claud A. Elrod	November 10, 1887	November 29, 1917
G100	Tisha Bowen	* 1885	May 23, 1906
G101	Alfred Elrod	*	*
G102	Unknown		

G103	Unknown		
G104	Mary L. Waters	* 1895	* 1948
G105	William L. Waters	* 1863	* 1934
G106	Louie Waters	* 1832	*
G107	Mary Jane Walter	* 1860	May 13, 1915
G108	Eloise Milford Boggs	July 28, 1881	March 20, 1953
H109	Laurence Clayton Boggs	January 1, 1883	January 8, 1959
H110	Linda Ruth Simpson	January 7, 1941	November 7, 1943
H111	J.T. White	*	*
H112	Unknown	*	*
H113	White infant	August 1, 1911	August 1, 1911
H114	Alden Mattheus	January 17, 1913	March 8, 1913
H115	Amanda Busby	*	* 1892
H116	Unknown	*	*
H117	Eliza Wells	December 25, 1929	May 4, 1921
H118	Bessie M. Whitten	* 1890	* 1968
H119	W. Henry Whitten	* 1890	* 1946
H120	Laura Ann Steadman	July 23, 1948	July 23, 1948
H121	Thomas Edward Whitten	*	November 4, 1922
H122	Rosa Elrod Whitten	*	April 1, 1920
H123	Elijah A. Bowen	May 30, 1882	March 3, 1933
H124	Unknown		
J125	Mary J. Bowen	September 24, 1883	August 6, 1960
J126	Thomas G. Daniel	June 9, 1881	March 25, 1974
J127	Lizzie M. Hunt Shiflett	* 1901	* 1928
J128	Laura E. Scott and Baby	January 29, 1883	March 25, 1923
J129	Louise D. ?	* 1925	* 1962
J130	Empty		
J131	Frances E. Sullivan	August 15, 1926	July 27, 1959
J132	Essie H. Sullivan	April 27, 1890	December 5, 1971
J133	Ben C. Sullivan	February 22, 1887	June 28, 1940
J134	Bertha M. Sullivan	March 21, 1925	September 22, 1926
J135	M.C. Daniel	June 22, 1858	February 28, 1926
J136	Mary G. Hembree	September 22, 1860	July 26, 1934
J137	John C. Daniel	July 12, 1884	May 16, 1935
J138	Minnie F. Daniel	October 20, 1889	September 24, 1973
J139	Jerry A. Daniel	* 1937	* 1937
J140	Lester White	* 1899	February 14, 1934
J141	Jesse Holbrooks	August 5, 1883	February 9, 1951
J142	Thomas J. Mcalister	August 13, 1903	October 6, 1945
J143	William N. Tankersly	*	*
J144	Patrick and Patricia Harrison	January 29, 1939	January 29, 1939
J145	Larry Edward Harrison	January 25, 1942	February 11, 1942
J146	Don and Dan Harrison	February 1, 1951	February 2, 1951
J147	Necota S. Harrison	October 7, 1909	June 12, 1981
J148	William A. Harrison	November 13, 1900	April 17, 1954
J149	John D. Keys	August 8, 1872	January 25, 1944
J150	Daisy C. Keys	April 9, 1882	November 9, 1958
J151	Evelyn D. Keys	October 17, 1926	August 8, 1935
J152	Tressie E. Keys	February 11, 1910	February 14, 1927
J153	A.C. Evans	September 28, 1916	January 1, 1945

J154	J.D. Evens	August 4, 1911	January 25, 1927
J155	David A. Evans	March 15, 1882	May 4, 1927
J156	Josie F. Evans	March 2, 1883	February 15, 1971
J157	John W. Hicks	* 1886	* 1962
J158	Della O. Hicks	* 1891	* 1961
K159	John C. Hicks	December 13, 1924	March 10, 1928
K160	Loyd C. Clark	* 1897	* 1932
K161	Roselee Jeans	August 28, 1808	October 27, 1962
K162	Unknown		
K163	Jordan Harris	April 19, 1940	April 19, 1940
K164	Richard Seaborn Shiflett	April 21, 1897	September 19, 1940
K165	Ida D. Shiflett	December 25, 1874	June 28, 1958
K166	unmarked		
K167	Roger Neil Beebe	*	July 6, 1958
K168	Susan Dale Beebe	*	November 18, 1957
K169	Sallie C. Robeson	* 1884	* 1961
K170	Lillie H. ?	* 1895	* 1950
K171	Wilburn F. Norris	* 1884	* 1958
L172	Albert Ralph Coker	March 24, 1937	March 26, 1937
L173	Columbus H. Coker	September 17, 1896	November 26, 1992
L174	Janie Poore Coker	April 25, 1906	April 1, 1937
L175	Patricia Gail Coker	July 26, 1949	December 30, 1949
L176	Anne Rigdon Coker	December 17, 1930	November 9, 1950
L177	William M. Shiflett	March 22, 1903	April 2, 1974
L178	Martha M. Shiflett	October 7, 1904	November 16, 1978
L179	Rubert Shiflett	* 1925	* 1964
M180	Annie K. Jefferson	* 1884	* 1971
M181	John J. Jefferson	* 1876	* 1950
M182	Samuel B. Coker	December 11, 1934	September 29, 1994
M183	Frank J. Coker	April 5, 1926	November 16, 1993
N184	James L. Todd	March 20, 1943	February 8, 2005
N185	N. Lucile H. Todd	October 15, 1921	
N186	Archie L. Todd	November 26, 1920	March 2, 1949
N187	Donnie Jones	September 25, 1946	September 27, 1946
N188	James Louie Jefferson	March 28, 1923	December 15, 1953
N189	James Jefferson	January 18, 1951	